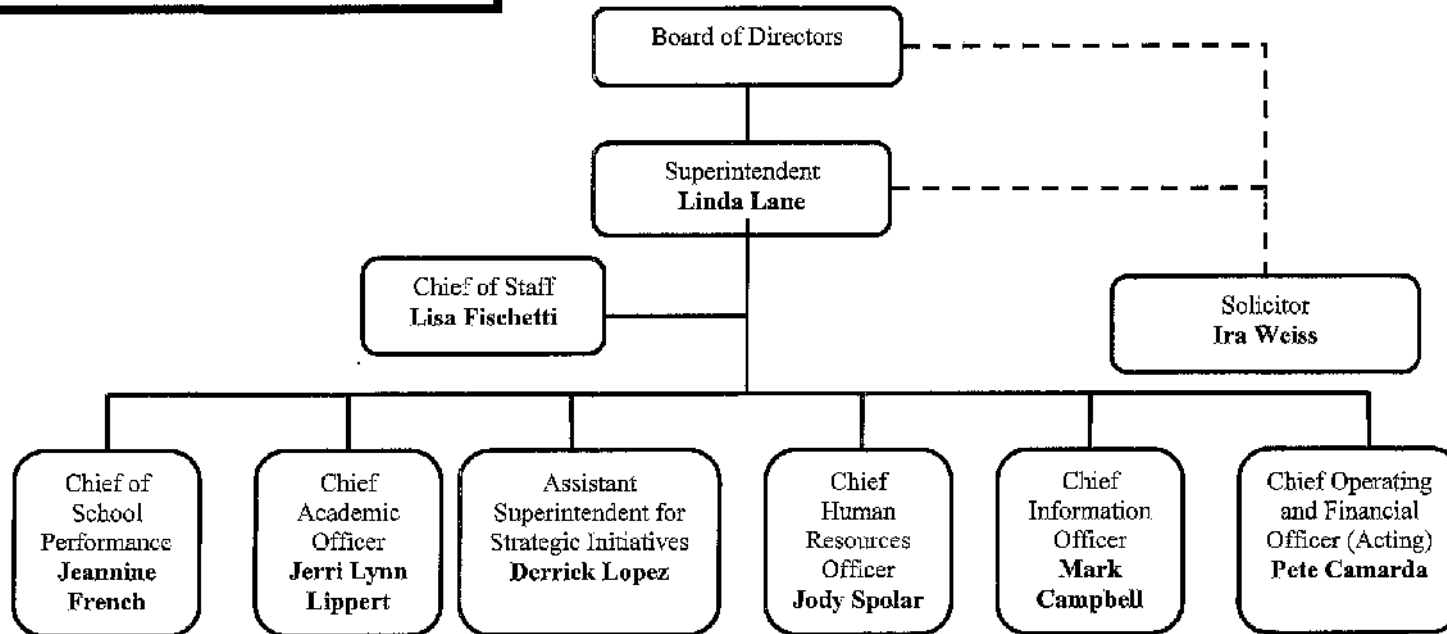


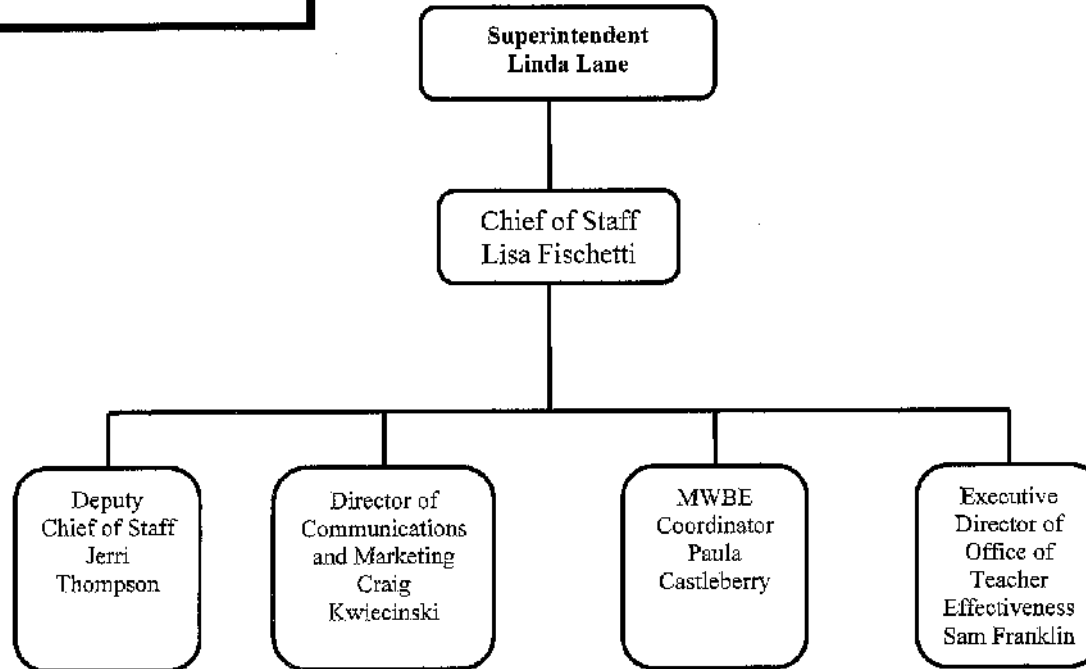
SUPERINTENDENT'S CABINET

FINAL 3/7/11

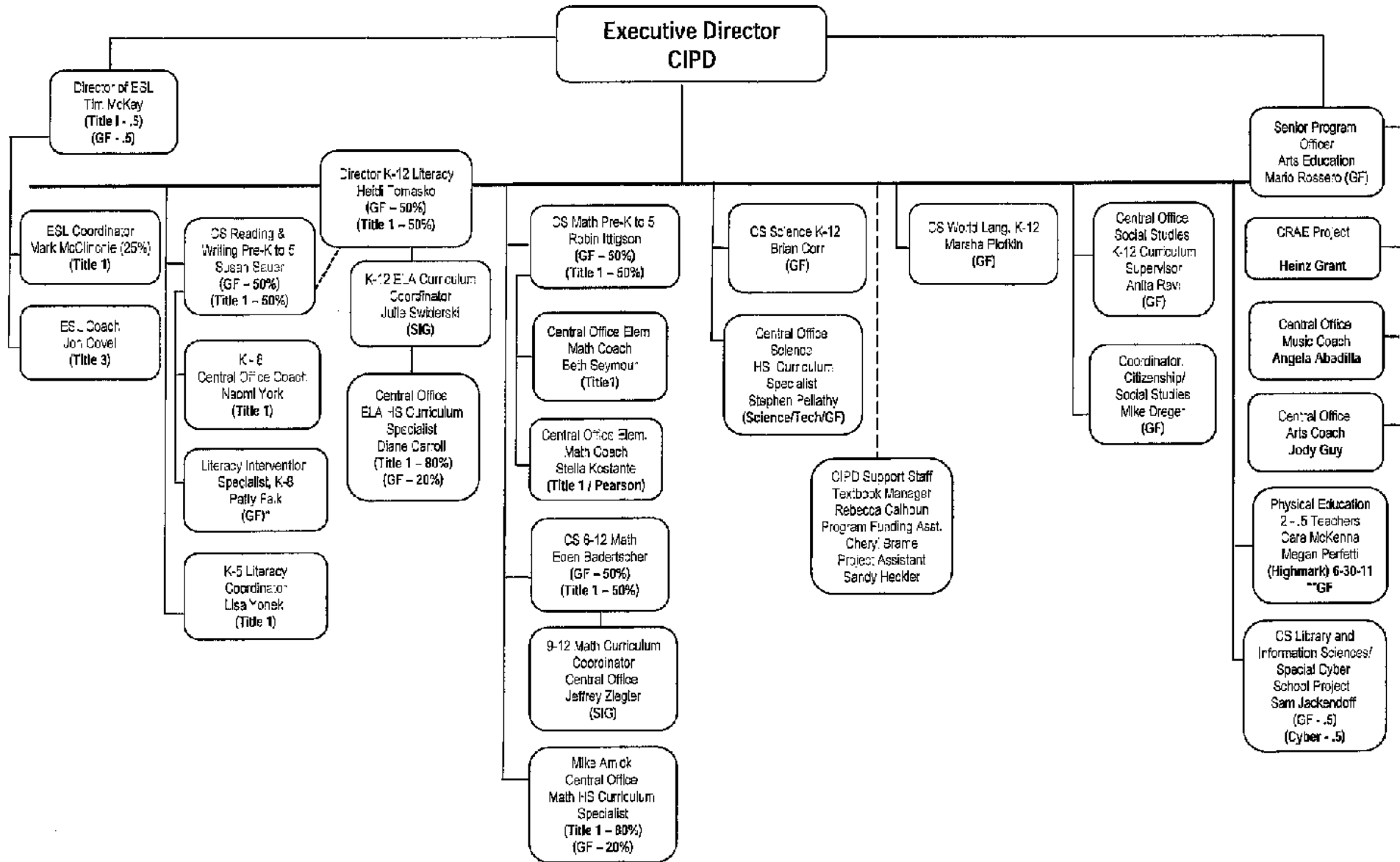


CHIEF OF STAFF

FINAL 3/7/11



Curriculum, Instruction and Professional Development



SCHOOL PERFORMANCE

FINAL 3/7/11

Superintendent
Linda Lane

Chief of School
Performance
Jeannine French

Assistant
Superintendent
K-5 Schools
(22)
Barbara Rudiak

Assistant
Superintendent
Secondary
Schools
(12)
Christiana
Otuwa

Assistant
Superintendent
Middle/K-8
(14 K-8)
(7 MS)
Vacancy

Chief of Student
Support
Services
Jan Ripper

Chief of
Research,
Assessment,
and
Accountability
Paulette
Poncelet

Executive
Director of
Special Education
Mary Jane Conley
(Joint report to
CAO)

- Allegheny K-5
- Argenal PreK-5
- Banksville PreK-5
- Beechwood PreK-5
- Concord K-5
- Dilworth PreK-5
- *Faison (French)
- ✓ Ft. Pitt
- Fulton PreK-5
- Grandview K-5
- *King (Lippert)
- Liberty K-5
- Lincoln
- Linden K-5
- Miller PreK-5
- Minadeo PreK-5
- Morrow PreK-5
- Phillips K-5
- Roosevelt PreK-5
- Spring Hill K-5
- Weil PreK-5
- West Liberty K-5
- Whittier K-5
- Woolslair K-5

- Allerdice HS
- *Brashear HS
(Lippert)
- CAPA 6-12
- Carrick HS
- Langley HS
- Milliones HS
- Obama 6-12
- Oliver HS
- Peabody HS
- Perry HS
- Sci Tech
- Westinghouse
- Girls & Boys

- Allegheny 6-8
- Arsenal 6-8
- Classical 6-8
- Schiller 6-8
- South Brook 6-8
- South Hills 6-8
- Sterrett 6-8

- ✓Arlington
- Brookline
- Carmalt
- Colfax
- Greenfield
- Manchester
- Mifflin

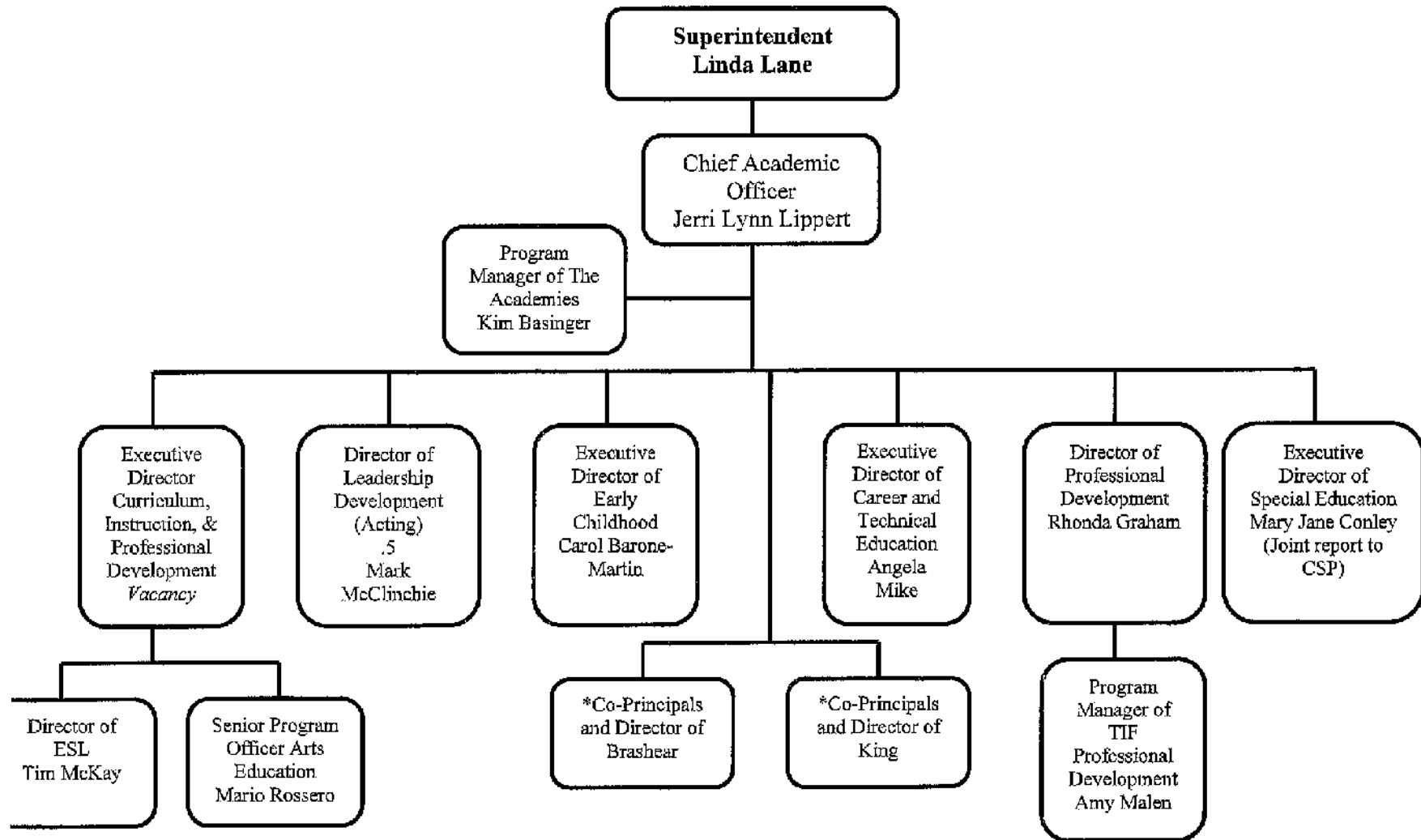
- Montessori
- ✓Murray
- Northview
- Schaeffer
- Stevens
- Sunnyside
- Westwood

- Contoy
- Gifted Center
- McNaugher
- Pioneer

*Day to day school management issues of Faison, King, and Brashear will be coordinated through the appropriate superintendent even though principal evaluation will be the responsibility of either the Chief of School Performance or Chief Academic Officer due to special programming.

CHIEF ACADEMIC OFFICE

FINAL 3/7/11



*Day to day School Management issues of King and Brashear will be coordinated through the Chief of School Performance.

STRATEGIC INITIATIVES

FINAL

